

## \$274,900 - 401 10160 115 Street, Edmonton

MLS® #E4457911

**\$274,900**

3 Bedroom, 2.00 Bathroom, 1,290 sqft  
Condo / Townhouse on 0.00 Acres

WÃ@hkwÃªntÃ´win, Edmonton, AB

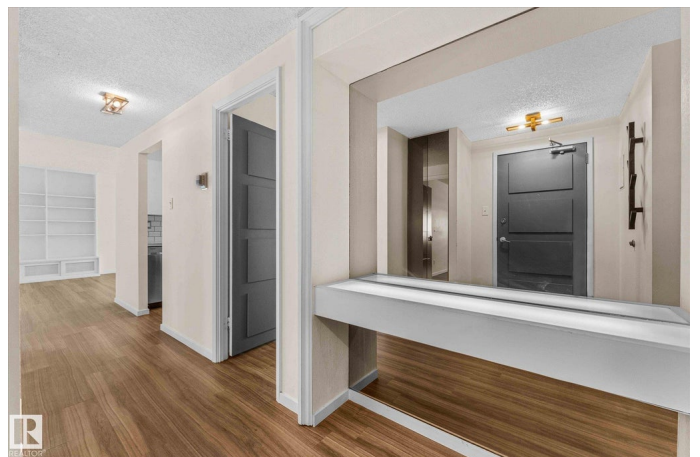
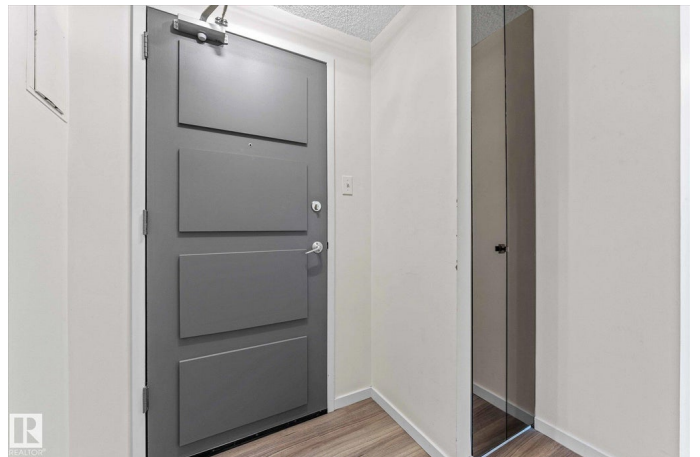
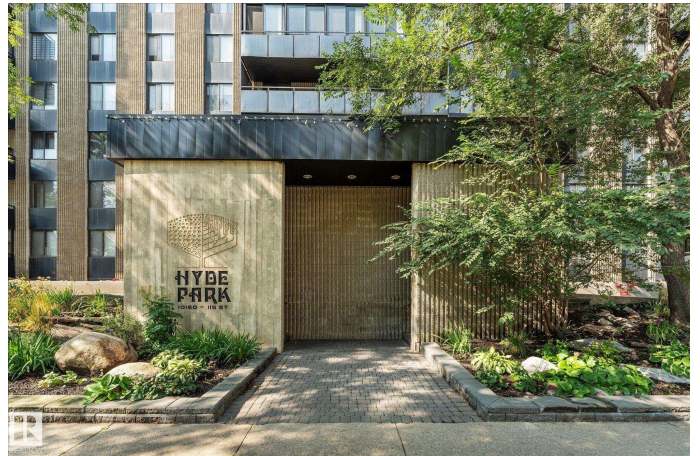
This stunning, executive condo offers 3-bedrooms, 2-bathrooms and nearly 1300 sq. ft. of renovated living space in vibrant downtown Edmonton. Located in the prestigious Hyde Park building, this south-west facing corner unit features an extended kitchen with upgraded appliances, cabinets, countertops and a breakfast bar. Other highlights include a laundry room with front loading washer / dryer and ample storage, a custom desk area, a massive balconyÂ and underground parking. Hyde Park boasts a comprehensive range of amenities, including an indoor pool and hot tub, outdoor pool with outdoor showers, exercise room, party room, and guest suite, along with outdoor tennis courts. Convenience is a key feature, with the property being within walking distance to all essential amenities such as grocery stores, restaurants, nightlife, the River Valley, Downtown, Brewery District, Oliver Square, Rogers Place, and the LRT. Condo fees at Hyde Park include all utilities, ensuring a hassle-free living experience.

Built in 1970

### Essential Information

MLS® # E4457911

Price \$274,900



Bedrooms	3
Bathrooms	2.00
Full Baths	2
Square Footage	1,290
Acres	0.00
Year Built	1970
Type	Condo / Townhouse
Sub-Type	Apartment High Rise
Style	Single Level Apartment
Status	Active

### Community Information

Address	401 10160 115 Street
Area	Edmonton
Subdivision	WÃ©hkwÃªntÃ´win
City	Edmonton
County	ALBERTA
Province	AB
Postal Code	T5K 1T6

### Amenities

Amenities	Air Conditioner, Exercise Room, Guest Suite, Hot Tub, Recreation Room/Centre, Sauna; Swirlpool; Steam, Secured Parking, Social Rooms
Parking Spaces	1
Parking	Parkade, Underground

### Interior

Interior Features	ensuite bathroom
Appliances	Dishwasher-Built-In, Dryer, Garburator, Oven-Microwave, Stove-Electric, Washer
Heating	Hot Water, Natural Gas
# of Stories	18
Stories	1
Has Basement	Yes
Basement	None, No Basement

### Exterior

Exterior	Concrete
Exterior Features	Golf Nearby, Picnic Area, Playground Nearby, Public Transportation,

Recreation Use, Shopping Nearby, View City

Roof	Unknown
Construction	Concrete
Foundation	Concrete Perimeter

**Additional Information**

Date Listed	September 15th, 2025
Days on Market	1
Zoning	Zone 12
Condo Fee	\$920

DATA IS DEEMED RELIABLE BUT IS NOT GUARANTEED ACCURATE BY THE REALTORS® ASSOCIATION OF EDMONTON. COPYRIGHT 2025 BY THE REALTORS® ASSOCIATION OF EDMONTON. ALL RIGHTS RESERVED.Trademarks are owned or controlled by the Canadian Real Estate Association (CREA) and identify real estate professionals who are members of CREA (REALTOR®, REALTORS®) and/or the quality of services they provide (MLS®, Multiple Listing Service®)

Listing information last updated on September 16th, 2025 at 7:02am MDT