

Courtesy Of Ron J Vivian Of Century 21 Leading

\$459,900 - 28 Hope Common, Spruce Grove

MLS® #E4454808

\$459,900

3 Bedroom, 2.50 Bathroom, 1,303 sqft
Single Family on 0.00 Acres

Harvest Ridge, Spruce Grove, AB

This beautiful 1303 square foot 2-Storey built in 2016 is a fully finished, non-smoking, pet free home, with upgraded central air conditioning, and has a paved back lane with a 20' x 20' double garage. Open concept floor plan, recently painted walls and the kitchen is a chef's dream, with loads of counter space, soft close cabinets, pot lighting, crown molding over the cabinets, undermount sink, granite countertops and stainless steel appliances. The living room is spacious with WEST facing windows and a gas fireplace with shelving beside. Upstairs are 3 spacious bedrooms with an ensuite and walk-in closet off the master and a 4-piece bath. Fully finished basement with a large family room. Large deck out back, fully fenced and landscaped yard. Walking distance to schools, parks, playgrounds, and scenic walking trails.

Built in 2016

Essential Information

MLS® #	E4454808
Price	\$459,900
Bedrooms	3
Bathrooms	2.50
Full Baths	2
Half Baths	1
Square Footage	1,303



Acres	0.00
Year Built	2016
Type	Single Family
Sub-Type	Detached Single Family
Style	2 Storey
Status	Active

Community Information

Address	28 Hope Common
Area	Spruce Grove
Subdivision	Harvest Ridge
City	Spruce Grove
County	ALBERTA
Province	AB
Postal Code	T7X 0X3

Amenities

Amenities	Air Conditioner, See Remarks
Parking	Double Garage Detached

Interior

Interior Features	ensuite bathroom
Appliances	Air Conditioning-Central, Dishwasher-Built-In, Dryer, Garage Opener, Microwave Hood Fan, Refrigerator, Stove-Electric, Washer, See Remarks
Heating	Forced Air-1, Natural Gas
Fireplace	Yes
Fireplaces	Glass Door
Stories	3
Has Basement	Yes
Basement	Full, Finished

Exterior

Exterior	Wood, Vinyl
Exterior Features	Back Lane, Fenced, Landscaped, Playground Nearby, Schools
Roof	Asphalt Shingles
Construction	Wood, Vinyl
Foundation	Concrete Perimeter

School Information

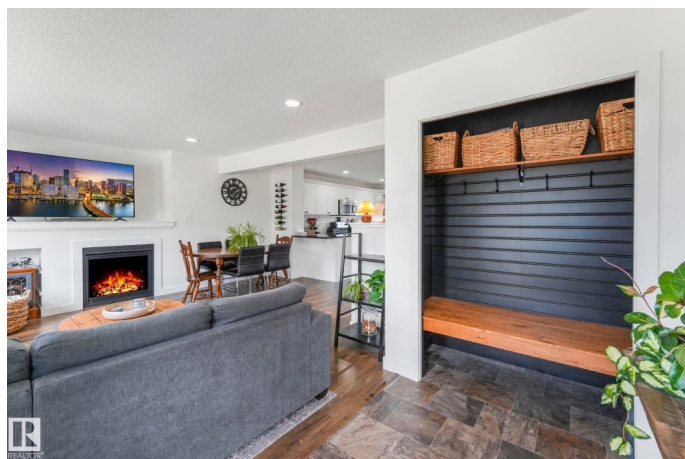
High St. Peter the Apostle Cath

Additional Information

Date Listed August 27th, 2025

Days on Market 20

Zoning Zone 91



DATA IS DEEMED RELIABLE BUT IS NOT GUARANTEED ACCURATE BY THE REALTORS® ASSOCIATION OF EDMONTON. COPYRIGHT 2025 BY THE REALTORS® ASSOCIATION OF EDMONTON. ALL RIGHTS RESERVED. Trademarks are owned or controlled by the Canadian Real Estate Association (CREA) and identify real estate professionals who are members of CREA (REALTOR®, REALTORS®) and/or the quality of services they provide (MLS®, Multiple Listing Service®)

Listing information last updated on September 16th, 2025 at 5:32am MDT