

## \$184,900 - 222 2035 Grantham Court, Edmonton

MLS® #E4442147

**\$184,900**

1 Bedroom, 1.00 Bathroom, 656 sqft

Condo / Townhouse on 0.00 Acres

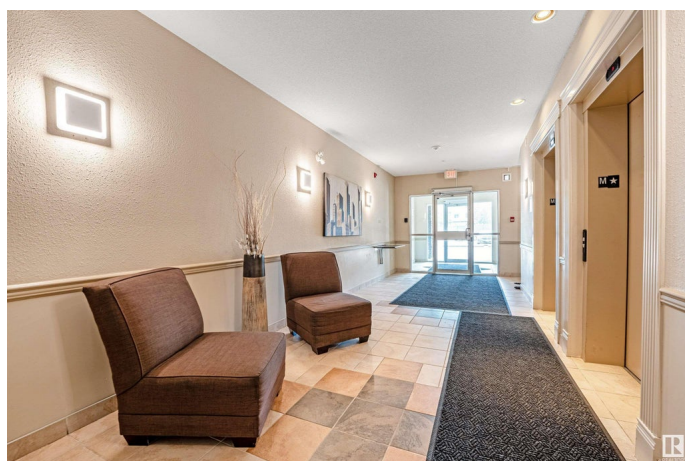
Glastonbury, Edmonton, AB

Stylish and well-maintained 1-bedroom condo on the 2nd floor, steps from the elevator and gym. Features include high quality vinyl-like laminate flooring, fireplace, stainless steel appliances, built-in pantry, and in-suite laundry. The open layout leads to a large, private balcony with tree coverage for added privacy. Underground parking stall comes with a storage room right beside it, plus a convenient car wash bayâ€”perfect for winter or year-round use. Enjoy great amenities including an entertainment room with kitchen, washroom, pool table, and TV, plus a guest suite that can be reserved by owners for visiting family or friends at a lower cost than hotels. Located close to shops, cafÃ©s, Costco, schools, green space, and with quick access to the Henday. A perfect option for first-time buyers, downsizers, or investors looking for a move-in-ready home in a prime location.

Built in 2008

### Essential Information

MLS® #	E4442147
Price	\$184,900
Bedrooms	1
Bathrooms	1.00
Full Baths	1



Square Footage	656
Acres	0.00
Year Built	2008
Type	Condo / Townhouse
Sub-Type	Lowrise Apartment
Style	Single Level Apartment
Status	Active

### Community Information

Address	222 2035 Grantham Court
Area	Edmonton
Subdivision	Glastonbury
City	Edmonton
County	ALBERTA
Province	AB
Postal Code	T5T 3X6

### Amenities

Amenities	Car Wash, Exercise Room, Guest Suite, Party Room, Recreation Room/Centre, Secured Parking, Social Rooms, Storage-Locker Room
Parking	Heated, Underground

### Interior

Interior Features	ensuite bathroom
Appliances	Dishwasher-Built-In, Dryer, Microwave Hood Fan, Refrigerator, Stove-Electric, Washer
Heating	In Floor Heat System, Natural Gas
Fireplace	Yes
Fireplaces	Mantel
# of Stories	4
Stories	1
Has Basement	Yes
Basement	None, No Basement

### Exterior

Exterior	Wood, Stone, Stucco
Exterior Features	Playground Nearby, Public Transportation, Schools, Shopping Nearby
Roof	Tar & Gravel
Construction	Wood, Stone, Stucco

Foundation                      Concrete Perimeter

**Additional Information**

Date Listed                      June 12th, 2025  
Days on Market                52  
Zoning                              Zone 58  
Condo Fee                        \$405

DATA IS DEEMED RELIABLE BUT IS NOT GUARANTEED ACCURATE BY THE REALTORS® ASSOCIATION OF EDMONTON. COPYRIGHT 2025 BY THE REALTORS® ASSOCIATION OF EDMONTON. ALL RIGHTS RESERVED.Trademarks are owned or controlled by the Canadian Real Estate Association (CREA) and identify real estate professionals who are members of CREA (REALTOR®, REALTORS®) and/or the quality of services they provide (MLS®, Multiple Listing Service®)  
Listing information last updated on August 3rd, 2025 at 3:47pm MDT