

## \$580,000 - 61 Lafleur Drive, St. Albert

MLS® #E4441502

**\$580,000**

3 Bedroom, 2.50 Bathroom, 1,270 sqft

Condo / Townhouse on 0.00 Acres

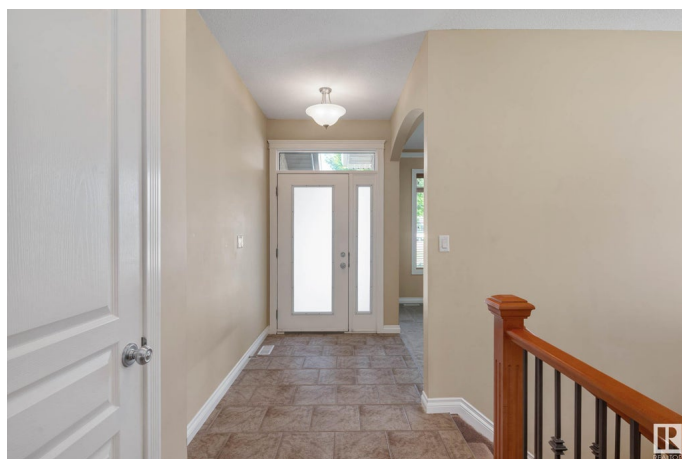
Lacombe Park, St. Albert, AB

Discover tranquility in this stunning 1270 sq ft, fully finished bungalow, nestled in a quiet adult community. Designed for discerning adults, this home boasts 3 bedrooms and 2.5 baths, including a spacious primary suite with a walk-in closet and full ensuite. Cozy up by one of two gas fireplaces, or enjoy the elegance of a stone exterior, air conditioning, and an attached double garage. Step outside to a beautifully manicured landscape and a private composite deck – ideal for relaxing. With two additional bedrooms and a full bath downstairs, there's ample space for guests or hobbies. Close to parks and shopping, and with quick possession available, this desirable complex offers the ultimate in comfortable, convenient living. Don't miss out!

Built in 2007

### Essential Information

MLS® #	E4441502
Price	\$580,000
Bedrooms	3
Bathrooms	2.50
Full Baths	2
Half Baths	1
Square Footage	1,270
Acres	0.00



Year Built	2007
Type	Condo / Townhouse
Sub-Type	Half Duplex
Style	Bungalow
Status	Active

### Community Information

Address	61 Lafleur Drive
Area	St. Albert
Subdivision	Lacombe Park
City	St. Albert
County	ALBERTA
Province	AB
Postal Code	T8N 0X5

### Amenities

Amenities	Air Conditioner, Deck, Detectors Smoke, No Smoking Home, Parking-Visitor, Vinyl Windows
Parking	Double Garage Attached, Insulated

### Interior

Interior Features	ensuite bathroom
Appliances	Air Conditioning-Central, Dishwasher-Built-In, Garage Control, Refrigerator, Stacked Washer/Dryer, Stove-Electric, Window Coverings
Heating	Forced Air-1, Natural Gas
Fireplace	Yes
Fireplaces	Glass Door
Stories	2
Has Basement	Yes
Basement	Full, Finished

### Exterior

Exterior	Wood, Composition, Stucco
Exterior Features	Golf Nearby, Level Land, Low Maintenance Landscape, Not Fenced, Playground Nearby, Private Setting, Public Transportation, Shopping Nearby
Roof	Asphalt Shingles
Construction	Wood, Composition, Stucco
Foundation	Concrete Perimeter

**Additional Information**

Date Listed	June 10th, 2025
Days on Market	6
Zoning	Zone 24
Condo Fee	\$500

DATA IS DEEMED RELIABLE BUT IS NOT GUARANTEED ACCURATE BY THE REALTORS® ASSOCIATION OF EDMONTON. COPYRIGHT 2025 BY THE REALTORS® ASSOCIATION OF EDMONTON. ALL RIGHTS RESERVED.Trademarks are owned or controlled by the Canadian Real Estate Association (CREA) and identify real estate professionals who are members of CREA (REALTOR®, REALTORS®) and/or the quality of services they provide (MLS®, Multiple Listing Service®)

Listing information last updated on June 15th, 2025 at 11:32pm MDT