

Courtesy Of Brent Anderson Of Century 21 Masters

\$485,000 - 5443 Crabapple Loop, Edmonton

MLS® #E4440441

\$485,000

3 Bedroom, 2.50 Bathroom, 1,747 sqft

Single Family on 0.00 Acres

The Orchards At Ellerslie, Edmonton, AB

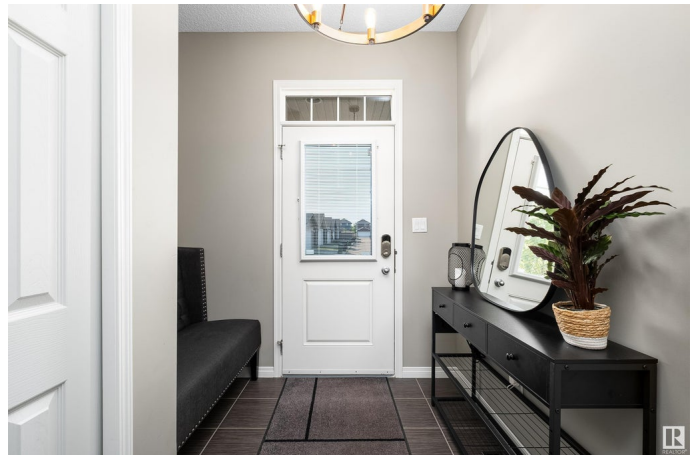
This absolutely stunning 1,747 sqft duplex is move-in ready and this gem located in the desirable community of The Orchards. Immaculately maintained, this beautiful home offers a perfect blend of comfort + style, making it an ideal choice for families + individuals alike. The open concept main floor is designed for modern living + entertaining. It boasts, enormous island, ample cabinetry + counter space, walk-in pantry, large living room with electric fireplace to enjoy during the cooler evenings. Step outside to enjoy the exquisite outdoor area, featuring a beautiful deck with gazebo + privacy curtains + natural gas hookup for BBQ + fire table. The upper level of this home offers large bonus room, a versatile space that can be used as a family room, office, or play area, primary bedroom with walk-in closet + 4-piece ensuite, two additional nicely sized bedrooms + 4 piece bathroom and laundry room. Other features, Custom window coverings and Central AC. Room to grow with the unfinished basement space.

Built in 2014

Essential Information

MLS® # E4440441

Price \$485,000



Bedrooms	3
Bathrooms	2.50
Full Baths	2
Half Baths	1
Square Footage	1,747
Acres	0.00
Year Built	2014
Type	Single Family
Sub-Type	Half Duplex
Style	2 Storey
Status	Active

Community Information

Address	5443 Crabapple Loop
Area	Edmonton
Subdivision	The Orchards At Ellerslie
City	Edmonton
County	ALBERTA
Province	AB
Postal Code	T6X 1S5

Amenities

Amenities	Deck, Detectors Smoke, Natural Gas BBQ Hookup
Parking Spaces	1
Parking	Single Garage Attached

Interior

Interior Features	ensuite bathroom
Appliances	Air Conditioning-Central, Dishwasher-Built-In, Dryer, Garage Control, Garage Opener, Microwave Hood Fan, Refrigerator, Stove-Electric, Vacuum System Attachments, Vacuum Systems, Washer, Window Coverings, TV Wall Mount
Heating	Forced Air-1, Natural Gas
Fireplace	Yes
Fireplaces	Glass Door, Insert
Stories	2
Has Basement	Yes
Basement	Full, Unfinished

Exterior

Exterior	Wood, Vinyl
Exterior Features	Airport Nearby, Fenced, Flat Site, Golf Nearby, Landscaped, Playground Nearby, Public Transportation, Schools, Shopping Nearby
Roof	Asphalt Shingles
Construction	Wood, Vinyl
Foundation	Concrete Perimeter

School Information

Elementary	Jan Reimer School
Middle	Jan Reimer School
High	J. Percy Page School

Additional Information

Date Listed	June 5th, 2025
Days on Market	12
Zoning	Zone 53
HOA Fees	450
HOA Fees Freq.	Annually

DATA IS DEEMED RELIABLE BUT IS NOT GUARANTEED ACCURATE BY THE REALTORS® ASSOCIATION OF EDMONTON. COPYRIGHT 2025 BY THE REALTORS® ASSOCIATION OF EDMONTON. ALL RIGHTS RESERVED. Trademarks are owned or controlled by the Canadian Real Estate Association (CREA) and identify real estate professionals who are members of CREA (REALTOR®, REALTORS®) and/or the quality of services they provide (MLS®, Multiple Listing Service®)

Listing information last updated on June 17th, 2025 at 3:02am MDT