

\$499,000 - 10835 152 Street, Edmonton

MLS® #E4439426

\$499,000

5 Bedroom, 3.00 Bathroom, 1,604 sqft
Single Family on 0.00 Acres

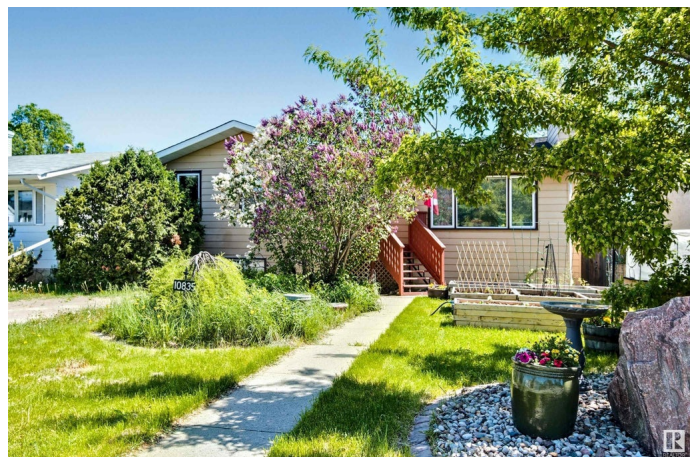
High Park (Edmonton), Edmonton, AB

Charming 1603 sq ft bungalow in wonderful High park. This home features 5 bedrooms, and a partially finished basement. This home is beautiful maintained and has a tonne of indoor/outdoor potential. This home features 5 bedrooms, 3 bathrooms, massive kitchen and dining room, large living room with wood burning fire place, the primary bedroom includes a full ensuite and a partially finished basement. The exterior of the home features a 50 x 150ft lot (subdividable), a double detached garage, a orchid type feel with 2 pear trees, apple tree, 2 saskatoon berry bushes, 4 blueberry bushes, a raspberry patch, strawberry's, and a raised garden bed. Upgrades include radon mitigation system, water on demand, newer garage door, central A/C, newer sink, newer upstairs bathroom, double ovens, new roof and so much more. A wonderful opportunity and truly a must see.

Built in 1981

Essential Information

MLS® #	E4439426
Price	\$499,000
Bedrooms	5
Bathrooms	3.00
Full Baths	3
Square Footage	1,604



Acres	0.00
Year Built	1981
Type	Single Family
Sub-Type	Detached Single Family
Style	Bungalow
Status	Active

Community Information

Address	10835 152 Street
Area	Edmonton
Subdivision	High Park (Edmonton)
City	Edmonton
County	ALBERTA
Province	AB
Postal Code	T5P 1Z4

Amenities

Amenities	Air Conditioner, Carbon Monoxide Detectors, Detectors Smoke, Hot Water Tankless, No Smoking Home, Parking-Visitor, Patio
Parking	Double Garage Detached

Interior

Interior Features	ensuite bathroom
Appliances	Air Conditioning-Central, Dishwasher-Built-In, Dryer, Garage Control, Garage Opener, Hood Fan, Refrigerator, Stove-Electric, Washer
Heating	Forced Air-1, Natural Gas
Stories	2
Has Basement	Yes
Basement	Full, Partially Finished

Exterior

Exterior	Wood, Stucco
Exterior Features	Back Lane, Fruit Trees/Shrubs, Landscaped, Playground Nearby, Public Transportation, Schools, Shopping Nearby, Subdividable Lot, See Remarks
Roof	Asphalt Shingles
Construction	Wood, Stucco
Foundation	Wood

Additional Information

Date Listed May 30th, 2025

Days on Market 17

Zoning Zone 21

DATA IS DEEMED RELIABLE BUT IS NOT GUARANTEED ACCURATE BY THE REALTORS® ASSOCIATION OF EDMONTON. COPYRIGHT 2025 BY THE REALTORS® ASSOCIATION OF EDMONTON. ALL RIGHTS RESERVED. Trademarks are owned or controlled by the Canadian Real Estate Association (CREA) and identify real estate professionals who are members of CREA (REALTOR®, REALTORS®) and/or the quality of services they provide (MLS®, Multiple Listing Service®)

Listing information last updated on June 16th, 2025 at 9:47am MDT