

\$420,000 - 4325 Prowse Link Link, Edmonton

MLS® #E4439050

\$420,000

3 Bedroom, 2.50 Bathroom, 1,393 sqft

Single Family on 0.00 Acres

Paisley, Edmonton, AB

Perfect for first-time home buyers or investors! Located in the desirable, quiet, family and pet-friendly community of Paisley—“with no HOA fees”—this bright end unit offers a total 1,393 sq ft of open-concept living space. The numerous windows fill the main floor with natural light. Upstairs, you’ll find a spacious primary bedroom with a walk-in closet and 4-piece ensuite, two additional bedrooms, a second full bath, and a thoughtfully placed laundry. The basement is unfinished, providing endless potential to create the space you envision. Enjoy summer evenings on the large backyard deck with easy access to the double detached garage. Walking distance to grocery stores, dining, and the fully fenced Paisley Dog Park, and just minutes from golf, Currents of Windermere, and the shops and dining along James Mowatt Trail. Quick access to the Anthony Henday, Calgary Trail, and the Edmonton International Airport. Don’t miss your chance to see this beautiful home!

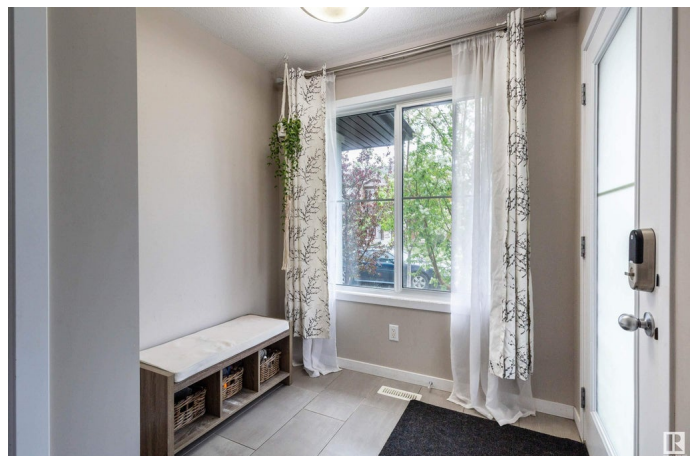
Built in 2018

Essential Information

MLS® # E4439050

Price \$420,000

Bedrooms 3



Bathrooms	2.50
Full Baths	2
Half Baths	1
Square Footage	1,393
Acres	0.00
Year Built	2018
Type	Single Family
Sub-Type	Residential Attached
Style	2 Storey
Status	Active

Community Information

Address	4325 Prowse Link Link
Area	Edmonton
Subdivision	Paisley
City	Edmonton
County	ALBERTA
Province	AB
Postal Code	T6W 3A7

Amenities

Amenities	On Street Parking, Deck, Detectors Smoke
Parking Spaces	2
Parking	Double Garage Detached

Interior

Interior Features	ensuite bathroom
Appliances	Dishwasher-Built-In, Garage Opener, Microwave Hood Fan, Refrigerator, Stacked Washer/Dryer, Stove-Electric
Heating	Forced Air-1, Natural Gas
Stories	2
Has Basement	Yes
Basement	Full, Unfinished

Exterior

Exterior	Wood, Vinyl
Exterior Features	Airport Nearby, Fenced, Golf Nearby, Low Maintenance Landscape, Schools, Shopping Nearby
Roof	Asphalt Shingles

Construction	Wood, Vinyl
Foundation	Concrete Perimeter

Additional Information

Date Listed	May 29th, 2025
Days on Market	18
Zoning	Zone 55

DATA IS DEEMED RELIABLE BUT IS NOT GUARANTEED ACCURATE BY THE REALTORS® ASSOCIATION OF EDMONTON. COPYRIGHT 2025 BY THE REALTORS® ASSOCIATION OF EDMONTON. ALL RIGHTS RESERVED.Trademarks are owned or controlled by the Canadian Real Estate Association (CREA) and identify real estate professionals who are members of CREA (REALTOR®, REALTORS®) and/or the quality of services they provide (MLS®, Multiple Listing Service®)

Listing information last updated on June 16th, 2025 at 12:17pm MDT