

# \$129,999 - 12110 119 Avenue, Edmonton

MLS® #E4436352

**\$129,999**

2 Bedroom, 2.00 Bathroom, 776 sqft

Condo / Townhouse on 0.00 Acres

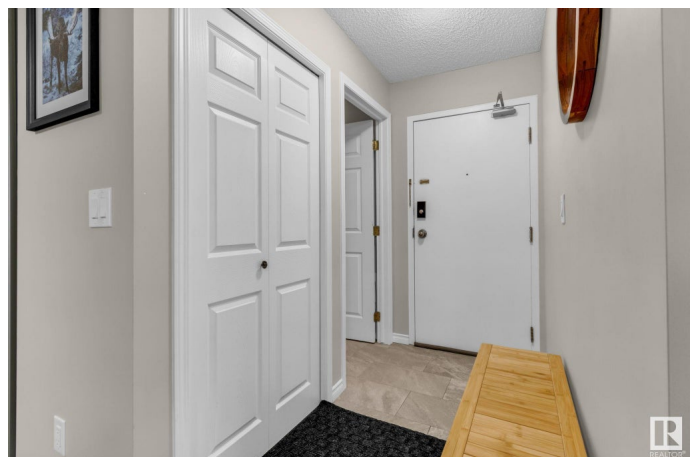
Prince Charles, Edmonton, AB

Welcome to this bright and well-kept 2-bedroom, 2-bathroom condo in the vibrant community of Prince Charles. This main-floor corner unit offers modern comfort with defined living spaces, stylish vinyl plank flooring, and large windows for plenty of natural light. The spacious primary bedroom features a private 4-piece ensuite, while the second bedroom is perfect for guests or a home office. Enjoy the convenience of in-suite laundry, a private patio that opens to a semi-private green space, and covered parking just steps from the entrance. Building amenities include an exercise room, elevator, and secure key fob access. With low condo fees and a central location close to downtown, NAIT, and shopping, this condo offers incredible value for first-time buyers, downsizers, or investors. Don't miss this opportunity to own in one of Edmonton's most connected neighbourhoods!

Built in 2002

## Essential Information

MLS® #	E4436352
Price	\$129,999
Bedrooms	2
Bathrooms	2.00
Full Baths	2
Square Footage	776



Acres	0.00
Year Built	2002
Type	Condo / Townhouse
Sub-Type	Lowrise Apartment
Style	Single Level Apartment
Status	Active

### Community Information

Address	12110 119 Avenue
Area	Edmonton
Subdivision	Prince Charles
City	Edmonton
County	ALBERTA
Province	AB
Postal Code	T5L 5G9

### Amenities

Amenities	Detectors Smoke, Exercise Room, Exterior Walls- 2"x6", Intercom, No Smoking Home, Parking-Plug-Ins, Parking-Visitor, Storage-In-Suite, Vinyl Windows
Parking	Single Carport

### Interior

Interior Features	ensuite bathroom
Appliances	Hood Fan, Oven-Microwave, Refrigerator, Stacked Washer/Dryer, Stove-Electric
Heating	Baseboard, Hot Water, Natural Gas
# of Stories	3
Stories	3
Has Basement	Yes
Basement	None, No Basement

### Exterior

Exterior	Wood, Vinyl
Exterior Features	Landscaped, Picnic Area, Playground Nearby, Public Swimming Pool, Public Transportation, Schools, Shopping Nearby
Roof	Asphalt Shingles
Construction	Wood, Vinyl
Foundation	Concrete Perimeter

**Additional Information**

Date Listed	May 14th, 2025
Days on Market	33
Zoning	Zone 04
Condo Fee	\$421

DATA IS DEEMED RELIABLE BUT IS NOT GUARANTEED ACCURATE BY THE REALTORS® ASSOCIATION OF EDMONTON. COPYRIGHT 2025 BY THE REALTORS® ASSOCIATION OF EDMONTON. ALL RIGHTS RESERVED.Trademarks are owned or controlled by the Canadian Real Estate Association (CREA) and identify real estate professionals who are members of CREA (REALTOR®, REALTORS®) and/or the quality of services they provide (MLS®, Multiple Listing Service®)

Listing information last updated on June 16th, 2025 at 12:17am MDT