

## \$215,000 - 1210 10145 109 Street, Edmonton

MLS® #E4435697

### \$215,000

3 Bedroom, 1.50 Bathroom, 1,109 sqft  
Condo / Townhouse on 0.00 Acres

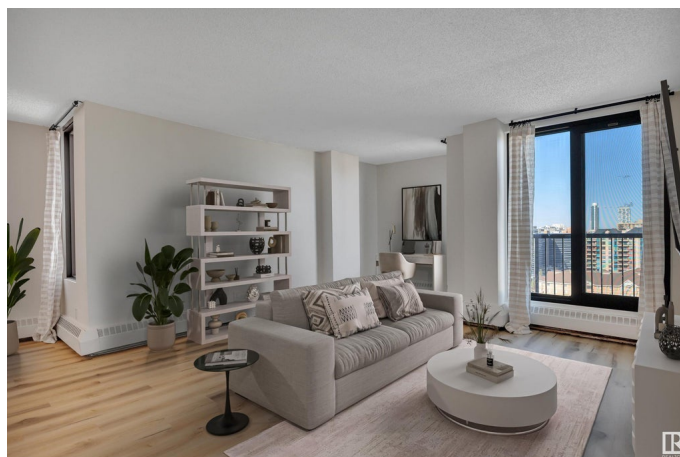
Downtown (Edmonton), Edmonton, AB

This TOP FLOOR 3 bed / 2 bath condo is ideally located just steps from the Ice District, MacEwan University, the LRT, and all the dining, shopping, and entertainment Downtown has to offer. The spacious entryway welcomes you into the updated condo, with stylish bathrooms, ample storage, and newer appliances, windows & doors, and vinyl flooring throughout. Beyond the kitchen, dining area, and open living room lies your extended balcony with storage room and unbeatable west-facing city views. The space is completed with 2 additional bedrooms and large storage room. Convenience is key with in-suite laundry, 2 titled underground parking stalls, and on-site fitness centre, security, and daycare. A must see!

Built in 1981

### Essential Information

MLS® #	E4435697
Price	\$215,000
Bedrooms	3
Bathrooms	1.50
Full Baths	1
Half Baths	1
Square Footage	1,109
Acres	0.00



Year Built	1981
Type	Condo / Townhouse
Sub-Type	Lowrise Apartment
Style	Single Level Apartment
Status	Active

### Community Information

Address	1210 10145 109 Street
Area	Edmonton
Subdivision	Downtown (Edmonton)
City	Edmonton
County	ALBERTA
Province	AB
Postal Code	T5J 3M5

### Amenities

Amenities	On Street Parking, Closet Organizers, No Smoking Home, Secured Parking, Storage-In-Suite, Rental Pool Option
Parking Spaces	2
Parking	Double Indoor, Heated, Parkade, Stall, Underground

### Interior

Interior Features	ensuite bathroom
Appliances	Dishwasher-Built-In, Hood Fan, Refrigerator, Stacked Washer/Dryer, Stove-Electric, Window Coverings
Heating	Baseboard, Natural Gas
# of Stories	12
Stories	1
Has Basement	Yes
Basement	None, No Basement

### Exterior

Exterior	Concrete, Brick
Exterior Features	Back Lane, Public Transportation, Shopping Nearby, View City, View Downtown
Roof	EPDM Membrane
Construction	Concrete, Brick
Foundation	Concrete Perimeter

### School Information

Elementary	St. Catherine, Grandin
Middle	St. Catherine, Spruce Ave
High	Victoria School of Arts

### **Additional Information**

Date Listed	May 9th, 2025
Days on Market	38
Zoning	Zone 12
Condo Fee	\$964

DATA IS DEEMED RELIABLE BUT IS NOT GUARANTEED ACCURATE BY THE REALTORS® ASSOCIATION OF EDMONTON. COPYRIGHT 2025 BY THE REALTORS® ASSOCIATION OF EDMONTON. ALL RIGHTS RESERVED. Trademarks are owned or controlled by the Canadian Real Estate Association (CREA) and identify real estate professionals who are members of CREA (REALTOR®, REALTORS®) and/or the quality of services they provide (MLS®, Multiple Listing Service®)

Listing information last updated on June 16th, 2025 at 12:47pm MDT