

Courtesy Of Jarred Lusk Of Real Broker

\$169,900 - 705 10175 109 Street, Edmonton

MLS® #E4434731

\$169,900

2 Bedroom, 1.00 Bathroom, 842 sqft

Condo / Townhouse on 0.00 Acres

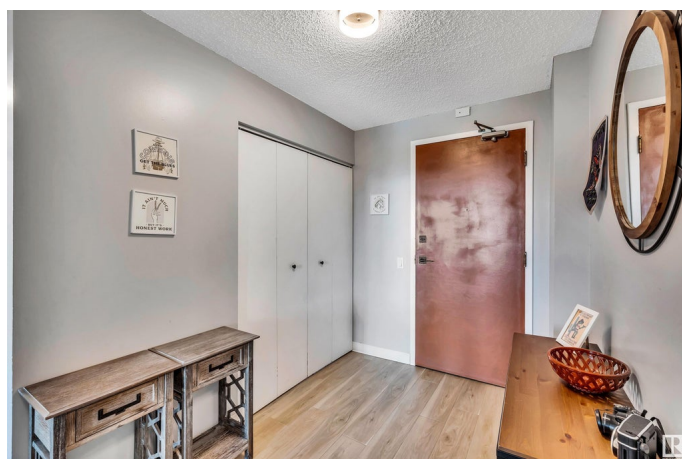
Downtown (Edmonton), Edmonton, AB

Welcome to this updated 2 bed, 1 bath condo in the heart of Downtown Edmonton, offering unobstructed west-facing views and modern comfort. Just a block away from the future Warehouse Park! from This bright unit features updated appliances, vinyl plank flooring, and fresh paint throughout. The open-concept layout is perfect for urban living, with large windows bringing in natural light and a spacious west facing balcony ideal for enjoying sunsets and city views. The well-managed building includes great on-site amenities such as a fully equipped gym and a spacious recreation room that also features a large rooftop patio, perfect for entertaining or unwinding. Located within walking distance to shopping, dining, LRT, and all downtown has to offer, this home is ideal for first-time buyers, professionals, or investors. Donâ€™t miss your chance to live in one of Edmontonâ€™s most walkable and vibrant communities! Welcome home!

Built in 1981

Essential Information

MLS® #	E4434731
Price	\$169,900
Bedrooms	2
Bathrooms	1.00



Full Baths	1
Square Footage	842
Acres	0.00
Year Built	1981
Type	Condo / Townhouse
Sub-Type	Apartment High Rise
Style	Single Level Apartment
Status	Active

Community Information

Address	705 10175 109 Street
Area	Edmonton
Subdivision	Downtown (Edmonton)
City	Edmonton
County	ALBERTA
Province	AB
Postal Code	T5J 3P2

Amenities

Amenities	Exercise Room, Recreation Room/Centre, Secured Parking, Social Rooms, Rooftop Deck/Patio
Parking Spaces	1
Parking	Underground

Interior

Appliances	Dishwasher-Built-In, Microwave Hood Fan, Refrigerator, Stacked Washer/Dryer, Stove-Electric
Heating	Baseboard, Hot Water, Natural Gas
# of Stories	9
Stories	1
Has Basement	Yes
Basement	None, No Basement

Exterior

Exterior	Concrete, Brick
Exterior Features	Shopping Nearby, View Downtown
Roof	Tar & Gravel
Construction	Concrete, Brick
Foundation	Concrete Perimeter

Additional Information

Date Listed	May 6th, 2025
Days on Market	42
Zoning	Zone 12
Condo Fee	\$682

DATA IS DEEMED RELIABLE BUT IS NOT GUARANTEED ACCURATE BY THE REALTORS® ASSOCIATION OF EDMONTON. COPYRIGHT 2025 BY THE REALTORS® ASSOCIATION OF EDMONTON. ALL RIGHTS RESERVED.Trademarks are owned or controlled by the Canadian Real Estate Association (CREA) and identify real estate professionals who are members of CREA (REALTOR®, REALTORS®) and/or the quality of services they provide (MLS®, Multiple Listing Service®)

Listing information last updated on June 17th, 2025 at 4:32am MDT