

\$574,900 - 29 Woods Crescent, Leduc

MLS® #E4430935

\$574,900

4 Bedroom, 3.00 Bathroom, 1,415 sqft

Single Family on 0.00 Acres

Windrose, Leduc, AB

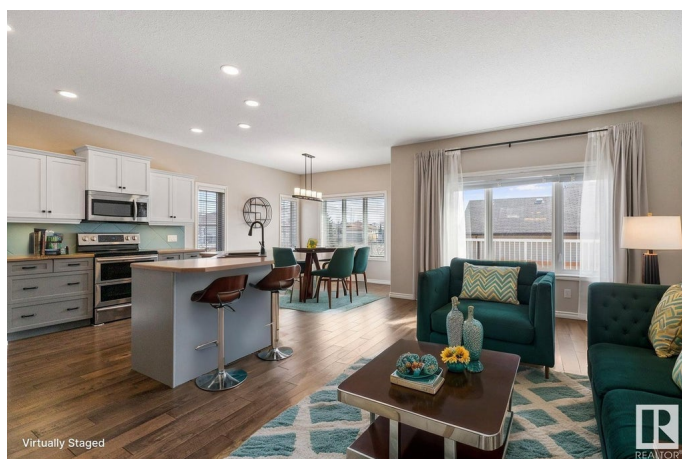
Beautifully UPDATED family home sitting on a corner lot, in the desirable family community of Windrose, featuring AC, NEW ROOF, 4 bedrooms & 3 baths. A spacious entrance invites you in to find newer hardwood flooring & 9' ceilings throughout the main level that is bursting with natural light. The kitchen offers plenty of modern 2 toned cabinets, corner pantry, stainless steel appliances & island that looks over the dining & living room with cozy fireplace. King sized primary suite with walk in closet & luxurious ensuite with soaker tub. 2nd bedroom is generous in size, 4pc main bath & laundry complement the main level. Moving downstairs to the fully finished basement you will LOVE the family sized rec room, 2 more bedrooms, 3pc bath & tons of storage, making this the PERFECT family home!. ENJOY the fenced & landscaped SOUTH yard with entertaining sized deck with storage underneath & raised garden boxes. Steps away from trails, parks, schools & shopping, plus easy access to Hwy 2. Home Sweet Home!

Built in 2003

Essential Information

MLS® # E4430935

Price \$574,900



Bedrooms	4
Bathrooms	3.00
Full Baths	3
Square Footage	1,415
Acres	0.00
Year Built	2003
Type	Single Family
Sub-Type	Detached Single Family
Style	Bi-Level
Status	Active

Community Information

Address	29 Woods Crescent
Area	Leduc
Subdivision	Windrose
City	Leduc
County	ALBERTA
Province	AB
Postal Code	T9E 8K4

Amenities

Amenities	Air Conditioner, Ceiling 9 ft., Deck, R.V. Storage, See Remarks, 9 ft. Basement Ceiling
Parking	Double Garage Attached

Interior

Interior Features	ensuite bathroom
Appliances	Air Conditioning-Central, Dishwasher-Built-In, Dryer, Garage Control, Garage Opener, Garburator, Microwave Hood Fan, Refrigerator, Stove-Electric, Washer, Window Coverings
Heating	Forced Air-1, Natural Gas
Fireplace	Yes
Fireplaces	Corner
Stories	2
Has Basement	Yes
Basement	Full, Finished

Exterior

Exterior	Wood, Vinyl
----------	-------------

Exterior Features	Fenced, Landscaped, Playground Nearby, Schools, Shopping Nearby, See Remarks
Roof	Asphalt Shingles
Construction	Wood, Vinyl
Foundation	Concrete Perimeter

Additional Information

Date Listed	April 15th, 2025
Days on Market	15
Zoning	Zone 81

DATA IS DEEMED RELIABLE BUT IS NOT GUARANTEED ACCURATE BY THE REALTORS® ASSOCIATION OF EDMONTON. COPYRIGHT 2025 BY THE REALTORS® ASSOCIATION OF EDMONTON. ALL RIGHTS RESERVED.Trademarks are owned or controlled by the Canadian Real Estate Association (CREA) and identify real estate professionals who are members of CREA (REALTOR®, REALTORS®) and/or the quality of services they provide (MLS®, Multiple Listing Service®)

Listing information last updated on April 30th, 2025 at 10:02am MDT