

\$849,990 - 29 Darby Crescent, Spruce Grove

MLS® #E4422233

\$849,990

4 Bedroom, 2.50 Bathroom, 2,573 sqft
Single Family on 0.00 Acres

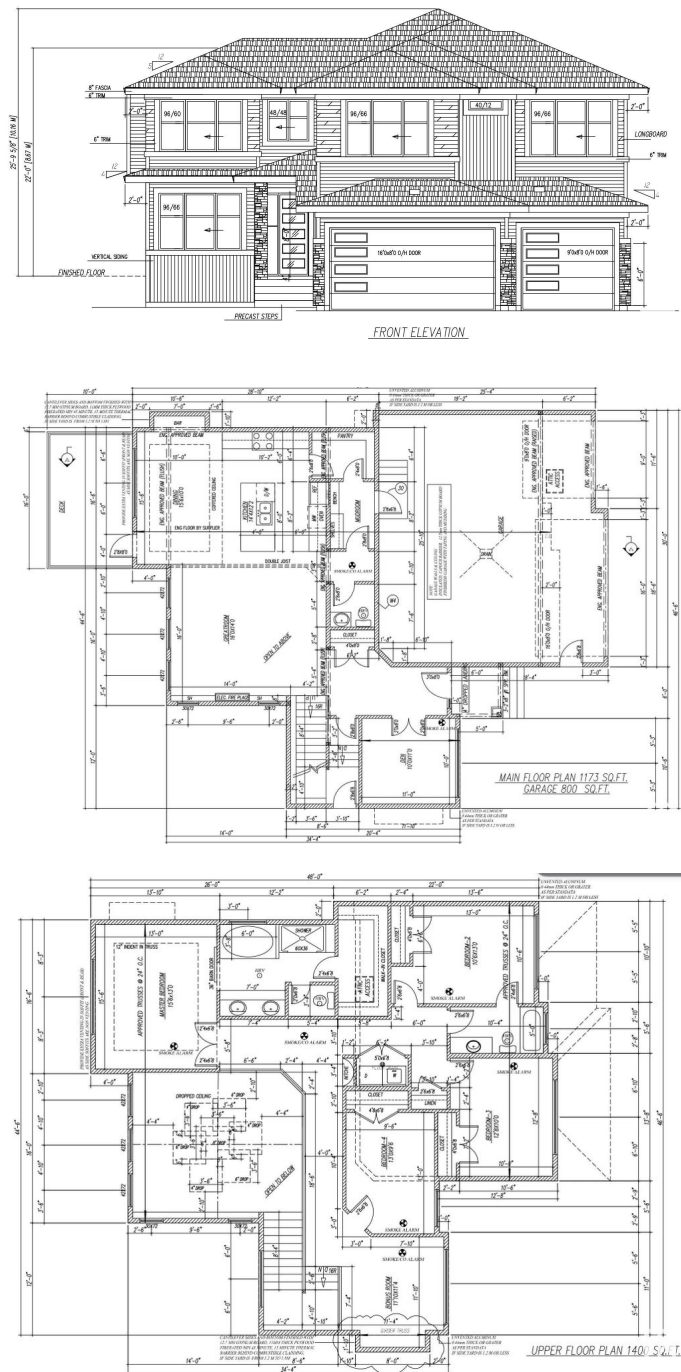
Deer Park_SPGR, Spruce Grove, AB

Located in Deer Park Estates and custom built by Sunnyview Homes, this immaculate property is situated on a 46 pocket lot.. Open to below living room with a feature wall and electric fireplace. The custom kitchen has ceiling height cabinets with an oversized central island and a waterfall quartz counter top, extended nook and a walk through pantry with plenty of storage space. A Den and a 2-piece powder room complete this floor. Upstairs the spacious primary bedroom is complete with a spa-like 5 piece ensuite and walk-in closet. The upper floor also features a 3 bedrooms, a bonus room, and a 3-piece bathroom. The 3-car attached garage with drainage offers comfort and convenience. The basement has a separate side entrance. Finished with big windows, premium lighting, MDF shelving, and feature walls, coffered ceilings, gas line, this house is a must see!
*Pictures are from a similar home constructed by the same builder. Actual finishes may vary.

Built in 2025

Essential Information

MLS® #	E4422233
Price	\$849,990
Bedrooms	4
Bathrooms	2.50



Full Baths	2
Half Baths	1
Square Footage	2,573
Acres	0.00
Year Built	2025
Type	Single Family
Sub-Type	Detached Single Family
Style	2 Storey
Status	Active

Community Information

Address	29 Darby Crescent
Area	Spruce Grove
Subdivision	Deer Park_SPGR
City	Spruce Grove
County	ALBERTA
Province	AB
Postal Code	T7X 0E6

Amenities

Amenities	Ceiling 10 ft., Ceiling 9 ft., Closet Organizers
Parking	Double Garage Attached, Triple Garage Attached

Interior

Interior Features	ensuite bathroom
Appliances	Garage Control, Garage Opener, Hood Fan
Heating	Forced Air-1, Natural Gas
Stories	2
Has Basement	Yes
Basement	Full, Unfinished

Exterior

Exterior	Wood, Vinyl
Exterior Features	Airport Nearby, Cul-De-Sac, Golf Nearby, Schools, Shopping Nearby
Roof	Asphalt Shingles
Construction	Wood, Vinyl
Foundation	Concrete Perimeter

Additional Information

Date Listed February 20th, 2025

Days on Market 69

Zoning Zone 91

DATA IS DEEMED RELIABLE BUT IS NOT GUARANTEED ACCURATE BY THE REALTORS® ASSOCIATION OF EDMONTON. COPYRIGHT 2025 BY THE REALTORS® ASSOCIATION OF EDMONTON. ALL RIGHTS RESERVED. Trademarks are owned or controlled by the Canadian Real Estate Association (CREA) and identify real estate professionals who are members of CREA (REALTOR®, REALTORS®) and/or the quality of services they provide (MLS®, Multiple Listing Service®)

Listing information last updated on April 30th, 2025 at 4:47am MDT