

\$559,900 - 111 Garneau Gate, Spruce Grove

MLS® #E4417371

\$559,900

3 Bedroom, 2.50 Bathroom, 2,071 sqft

Single Family on 0.00 Acres

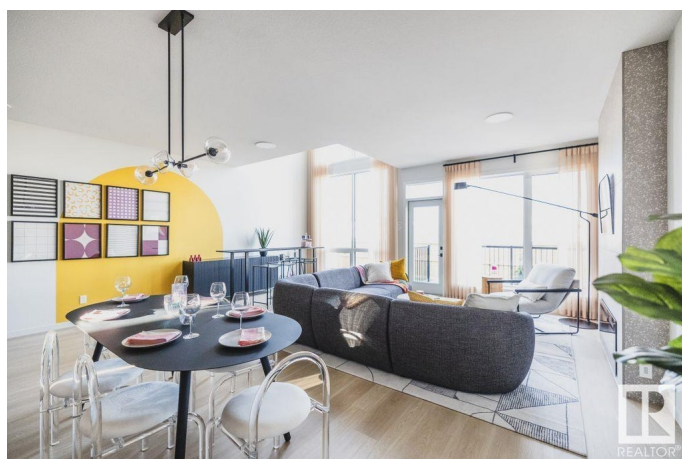
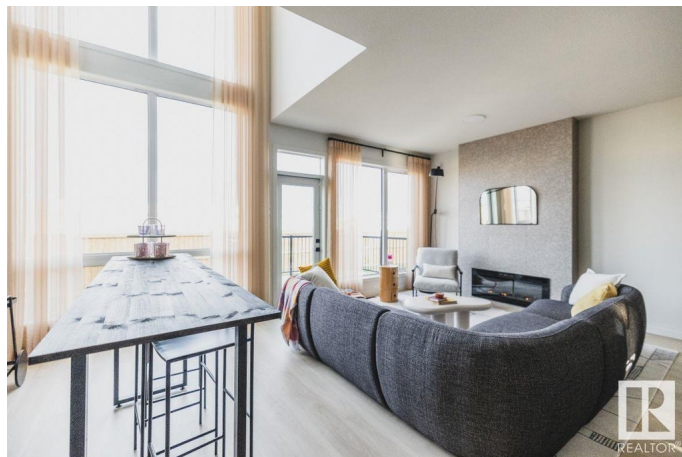
Greenbury, Spruce Grove, AB

The Entertain Play 22 is designed with both functionality and entertaining in mind. It features a functional family entrance, making it easy to welcome guests into your lovely space. The spacious layout includes 3 bedrooms and 2.5 baths with a 9 foot ceiling and an open to below design that adds to the airy, welcoming feel. The chef's kitchen, complete with 2 expansive eating bars and stainless steel appliances, is perfect for preparing meals and hosting gatherings. The luxurious soaker tub and tiled shower create a relaxing atmosphere after a long day. For added convenience, the built-in vanity streamlines morning routines. Other highlights include a side entry, a modern glass railing, a large recreation room upstairs and an electric fireplace. *photos are for representation only. Colours and finishing may vary*

Built in 2024

Essential Information

MLS® #	E4417371
Price	\$559,900
Bedrooms	3
Bathrooms	2.50
Full Baths	2
Half Baths	1
Square Footage	2,071



Acres	0.00
Year Built	2024
Type	Single Family
Sub-Type	Detached Single Family
Style	2 Storey
Status	Active

Community Information

Address	111 Garneau Gate
Area	Spruce Grove
Subdivision	Greenbury
City	Spruce Grove
County	ALBERTA
Province	AB
Postal Code	T7X 0M6

Amenities

Amenities	Detectors Smoke, No Animal Home, No Smoking Home
Parking	Double Garage Attached

Interior

Interior Features	ensuite bathroom
Appliances	Dishwasher-Built-In, Hood Fan, Oven-Microwave, Refrigerator, Stove-Electric
Heating	Forced Air-1, Natural Gas
Stories	2
Has Basement	Yes
Basement	Full, Unfinished

Exterior

Exterior	Wood, Vinyl
Exterior Features	Golf Nearby, Playground Nearby, Public Transportation, Schools, Shopping Nearby
Roof	Asphalt Shingles
Construction	Wood, Vinyl
Foundation	Concrete Perimeter

Additional Information

Date Listed	January 8th, 2025
-------------	-------------------

Days on Market 112

Zoning Zone 91

DATA IS DEEMED RELIABLE BUT IS NOT GUARANTEED ACCURATE BY THE REALTORS® ASSOCIATION OF EDMONTON. COPYRIGHT 2025 BY THE REALTORS® ASSOCIATION OF EDMONTON. ALL RIGHTS RESERVED. Trademarks are owned or controlled by the Canadian Real Estate Association (CREA) and identify real estate professionals who are members of CREA (REALTOR®, REALTORS®) and/or the quality of services they provide (MLS®, Multiple Listing Service®)

Listing information last updated on April 30th, 2025 at 9:32am MDT